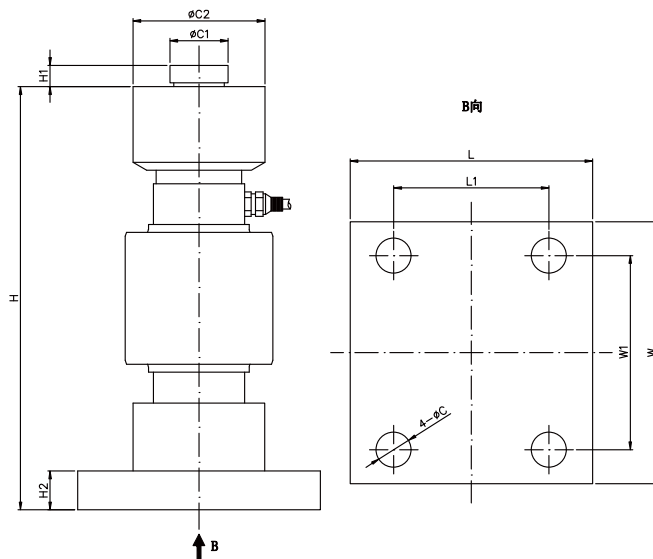


617A-MA

ALLOY STEEL / STAINLESS STEEL

合金钢/不锈钢



尺寸 DIMENSIONS

Rate Capacity 量程	C	C1	C2	L	L1	W	W1	H	H1	H2
t/mm										
10-30	18	30	88	125	80	135	100	218	20	20
40-60	18	40	97	160	124	160	124	218	20	20
klb/inches(conversion of above dimensions 由以上尺寸转换)										
22-30	0.71	1.18	3.46	4.92	3.15	5.31	3.94	8.58	0.79	0.79
88-132	0.71	1.57	3.82	6.30	4.77	6.30	4.90	8.58	0.79	0.79

技术参数 SPECIFICATIONS

Full Scale Output 灵敏度输出	$2.0 \pm 0.1\%mV/V$	Recommended Excitation 使用电压	10V(15V Maximmm)
Zero Balance 零点输出	$\pm 0.04mV/V$	Insulation Resistance 绝缘阻抗	$>2[50V DC]G\Omega$
Nonlinearity 非线性	$< \pm 0.03\%$	Nominal Temperature Range 工作温度	$-10^{\circ}C$ to $40^{\circ}C$ / $14^{\circ}F$ to $104^{\circ}F$
Repeatability 重复性	$< \pm 0.03\%$		
Hysteresis Error 滞后	$< \pm 0.03\%$	Safe Overload 安全过载	150% of full scale
Creep in 30 min 30分钟蠕变	$< \pm 0.05\%$	Breaking Overload 极限过载	300% of full scale
Input Resistance 输入电阻	$775\Omega \pm 5$	IP Rating 防护等级	IP67/IP68
Outnput Resistance 输出电阻	$702\Omega \pm 2$	Cable Color Code 颜色码	Exc(输入)+:Red(红);Exc(输入) -Black(黑);Sig(输出)+Green(绿); Sig(输出)-:Whit白 Shield Bare(屏蔽)
Element Materia 材质	Alloy steel/Stainless steel 合金钢/不锈钢		

617A-MA

Special Features 特征

- ◆ 符合OIML认证指标
- ◆ Comply with OIML C3
- ◆ 高精度
- ◆ High accuracy
- ◆ 合金钢
- ◆ Alloy steel construction
- ◆ 易于安装, 性能稳定
- ◆ Easy installation reliable performance
- ◆ 合金钢/不锈钢
- ◆ Alloy/Stainless steel available